

# St. John's Parish Museum Update

**All display cases are in!**

Please take time and check out our St. John's Parish Museum located in the lobby and north hallway of the Parish Center. Some open times to view the displays are on the second Sunday of each month after the masses when there is coffee and donuts, at the "St. Bonifest" at the end of October, or a scheduled time to tour the museum by calling the rectory. A Museum Guide book will be coming soon. It will contain all the information that is in our Parish Museum, plus much more information that we were not able to display at this time.

**Come and learn about our rich history and heritage!**

**Thank you again to all the Volunteers!**



Catholic Life



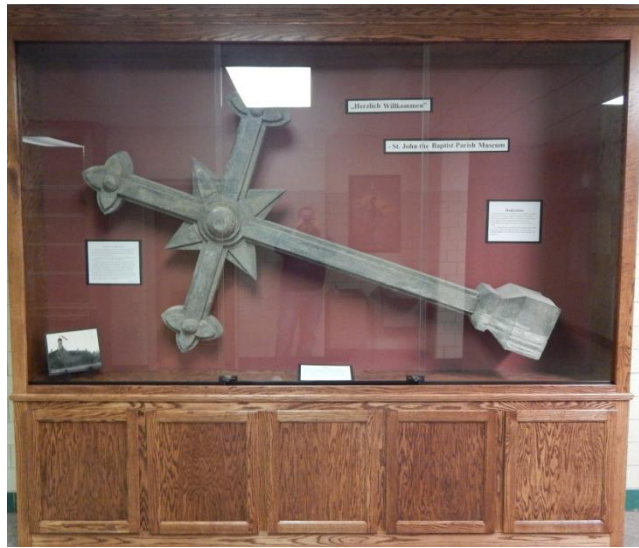
Country Schools & Village School



Glandorf High School



Parish Center Lobby



Cross from the Glandorf Convent (Demolished in 1915)



St. Dominic Painting



Lobby Display Case



Guardian Angel Painting

All Glandorf High School trophies (pre-1965) are now in the front Gym lobby with the Glandorf High School graduating class pictures and the CYO trophies. All Elementary/Jr. High trophies (1965 thru present) were returned to the Elementary School.